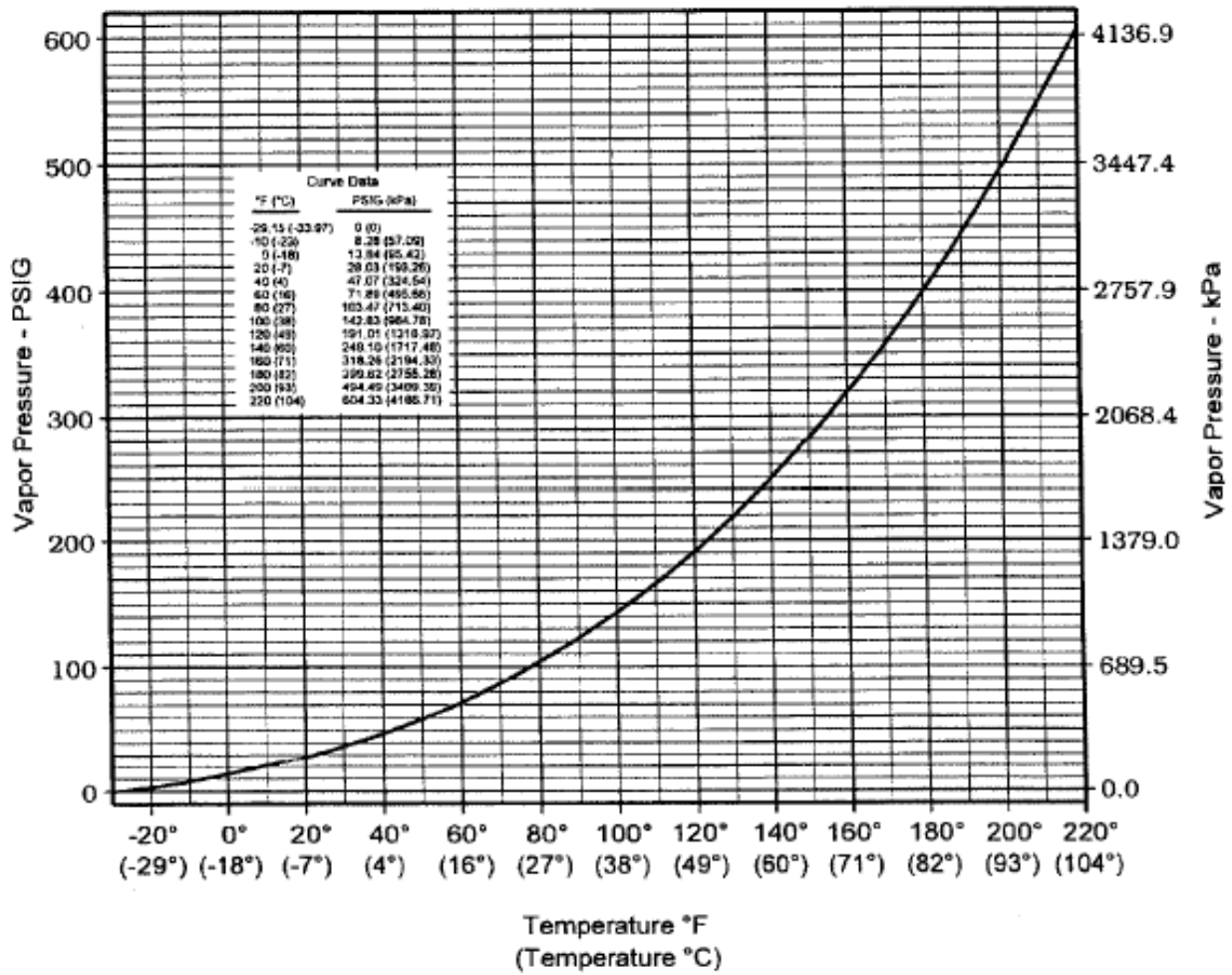


Annexure I – Chlorine vapour pressure curve

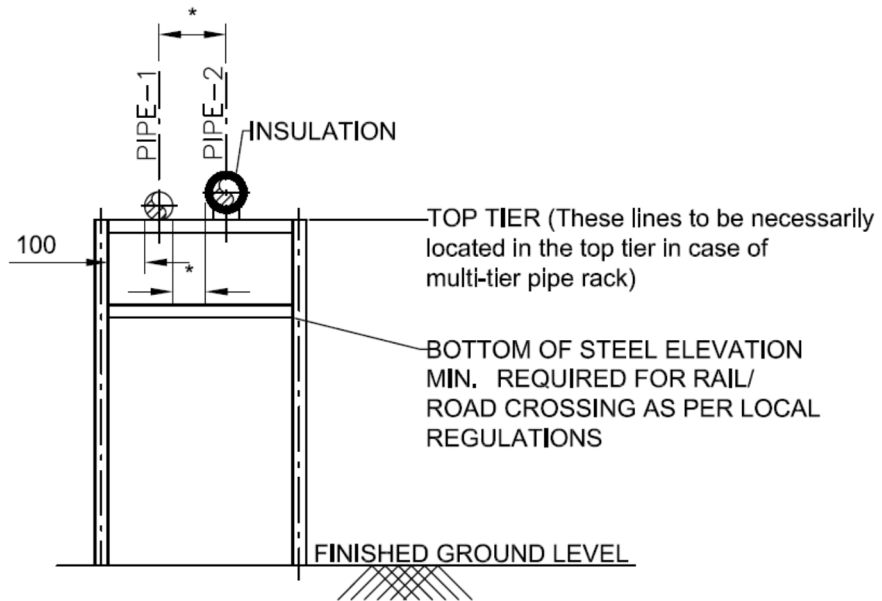


Source: The Chlorine Institute Pamphlet 1

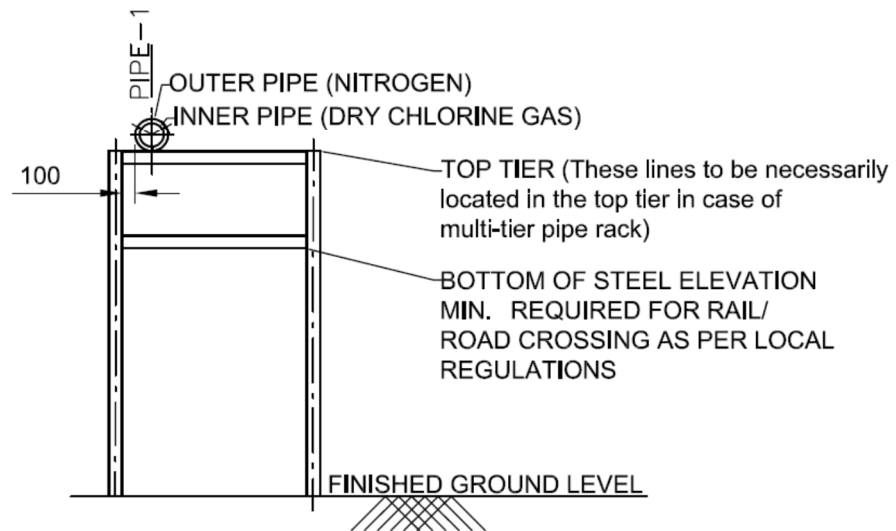
Annexure II – Piping Specification

Rating Class	: ANSI Class 300
Piping Size	: Minimum size: 50 DN
Pipeline Size	: Minimum size: 80 DN
Piping Material	: A 333 GR.6, Seamless, Standard ASME B36 .10M, Butt Weld Ends connections / Optional: API Specification 5L with Charpy Test at (-)45°C
Pipe fittings	: A420 Gr.WPL6W, Standard: ASME B16.9, Butt Weld Ends connections
Pipe Flanges	: A350 Gr.LF2, Standard: B16.5, Butt Weld Ends connections, Raised Face
Pipe Bolts	: A320 Gr.L7/A194 Gr.4
Gaskets	: Spiral Wound, Monel + PTFE, B16.20/B16.5
Valves Type	: Bellow Sealed Globe Valves, Euro Chlor Design and Euro Chlor certified valves
Valves material	:
Body Material	: A352 Gr. LCB, Stellated seat,
Bellow material	: Hastelloy C-276
Bonner Gasket	: Spiral wound Monel + PTFE
Packing	: PTFE V-RING
Standard	: ASME B16.34, Flanged B16.5, Raised Face

Annexure III - Typical above ground Pipeline Section



ABOVE GROUND BARE / INSULATED PIPE



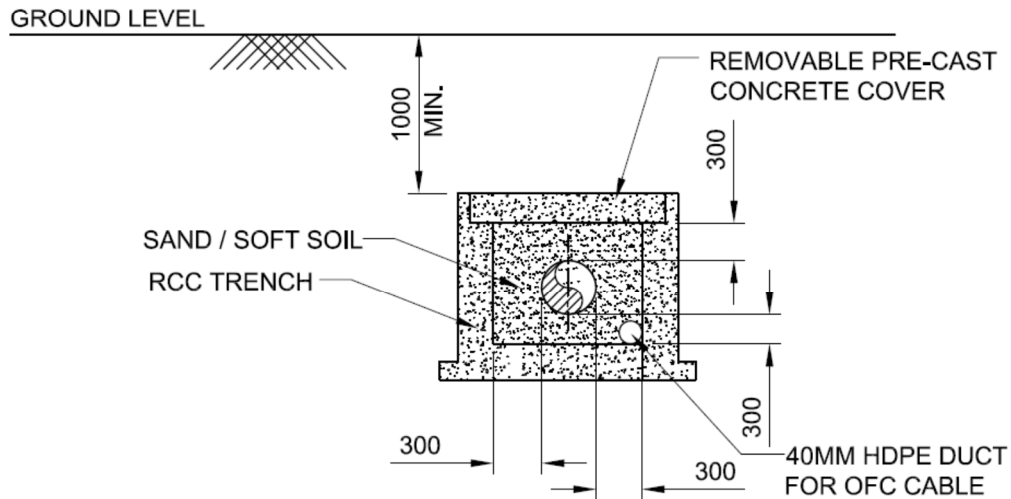
ABOVE GROUND PIPE IN PIPE

NOTES:

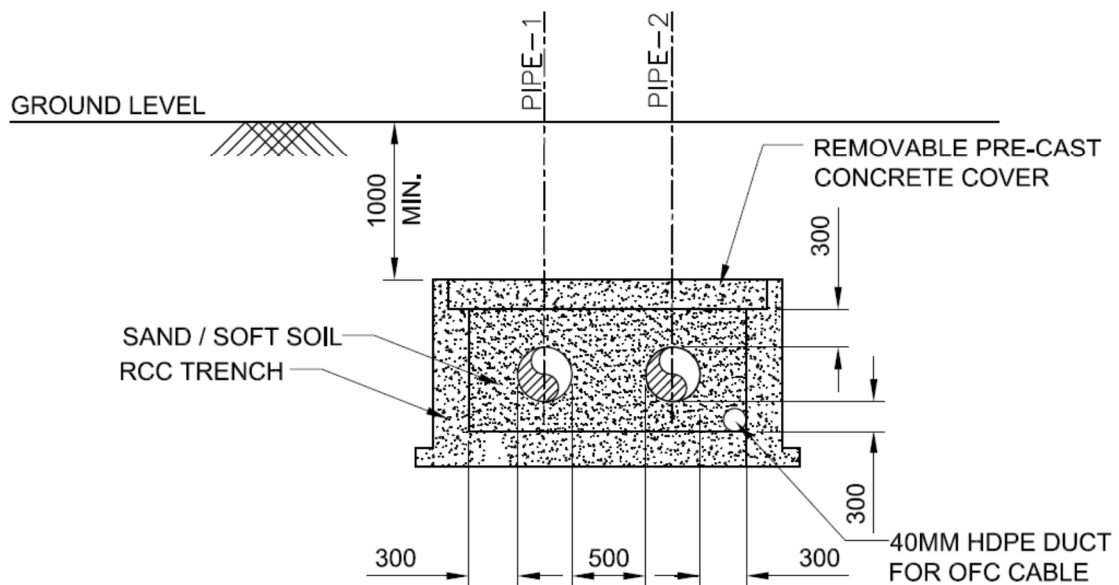
1. All dimensions are in MM.

* As per good Engineering Practice

Annexure IV - Typical Underground Pipeline Section



SINGLE BURIED PIPE



TWIN BURIED PIPES IN COMMON TRENCH

NOTES:

1. All dimensions are in MM.
2. Concrete trench / cover is to be designed for the loads.
3. Trench fill shall be sand / soft soil free from rocks or other such materials and shall be suitably compacted.